



PCORE
ELECTRIC

KV CLASS 34.5 kV | BIL 200 kV | U_y 22 kV

CURRENT RATING

1200 AMP BOTTOM CONNECTED

DWG. CATALOG NUMBER GLAZE COLOR

SD B-89312-293 BROWN

SD B-89312-293-70 LT. GRAY

DATE 8-10-16 REV. DATE 1-9-20

MAXIMUM ALTITUDE 10000 ft [3000 m]

NET WEIGHT 70 lb [32 kg]

ANGLE OF INCLINATION FROM THE VERTICAL 70° TO 90°

MIN. CREEP 41.00 [1041.4] MIN. STRIKE 17.00 [431.8]

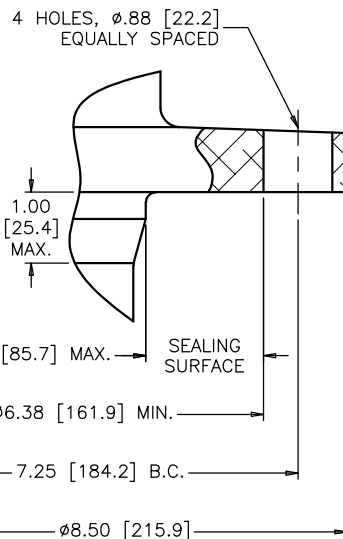
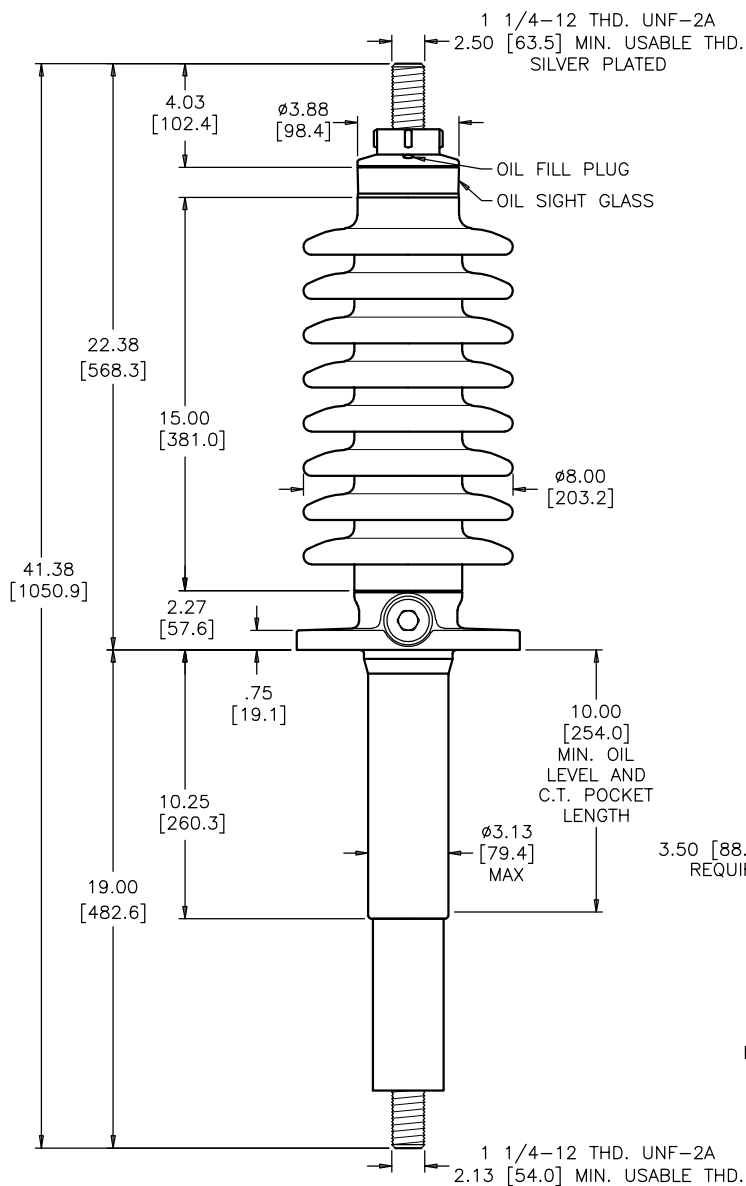
CREEP/L-G 2.06 [52.3] STD. IEEE C57.19.00/01

PCB CONTENT OF OIL IS LESS THAN 1 ppm

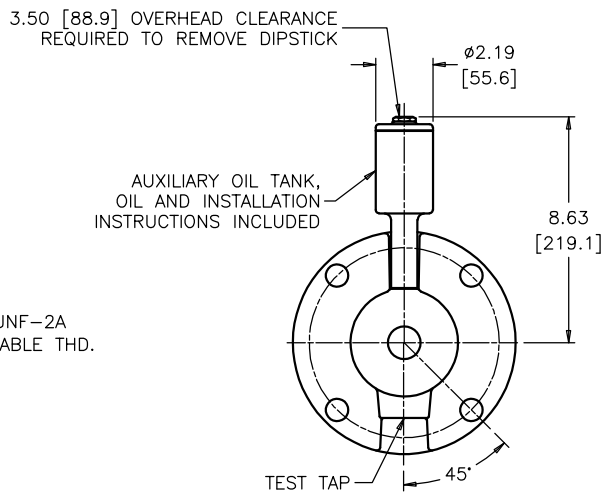
TITLE

PRC BUSHING

AIR TO OIL HORIZONTALLY MOUNTED WITH TANK,
1 1/4-12 THREAD TOP AND BOTTOM TERMINALS



MOUNTING FLANGE



FLANGE ALIGNMENT DIAGRAM SHOWN HORIZONTALLY MOUNTED

DIMENSIONS IN INCHES [MILLIMETERS]

REVISION NET WEIGHT WAS 76 lb

SCALE 1/5

NOTE TO PURCHASER:
ALL SALES OF PCORE PRODUCTS ARE SUBJECT TO OUR STANDARD TERMS AND CONDITIONS AND THE LIMITED WARRANTIES THEREUNDER